

On the SD card:

- DriftBox Tools software
- Circuit Tools software
- User manual

Register your DriftBox to activate all functions:
www.vboxmotorsport.co.uk/register

Quick Start Guide

Installation

For best satellite reception, ensure your **DriftBox** is fixed **low down** in the **centre of the windscreen**. The first time the unit is used, it will **need to be left for 10-15 minutes** to fully acquire satellites. After this, it will **usually take 1-2 minutes** to acquire satellites.



Drift Mode

DriftBox will measure the angle between the direction the car is pointing, and the direction the car is going. It will display this angle in the middle of the screen, as well as the peak angle achieved in that drift and the vehicle's speed.

When fitting your DriftBox to your vehicle, you must be sure the unit is level, this ensures accurate drift values. You can do this by selecting:

Menu/Setup/Alignment



Either button sets lap start/finish line

Lap Timing - Setting a Start/Finish line

Ensure the unit is in Lap Timing mode. Press **▲** or **▼** button while driving over the point you wish to define as your start/finish line.



Performance Tests

This mode allows you to select a number of user-configurable tests, including **0-60, 0-100, 0-100-0, ¼ mile**, etc. Before starting an acceleration test, **ensure the vehicle is absolutely stationary.**

Predictive Lap Timing

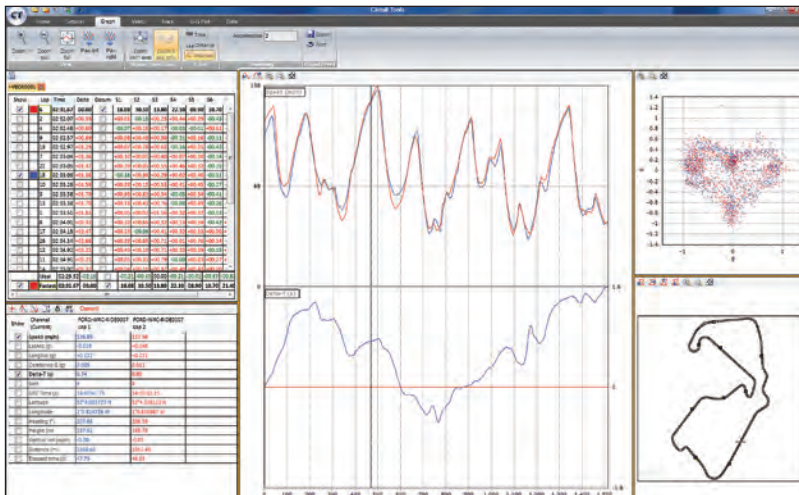
DriftBox **Predictive Lap Timing mode** compares your current lap with your best so far, in real time. Enter this mode from the lap timing screen.



Data Logging

DriftBox continually logs data to an SD card (if inserted) when the vehicle is moving. Data can then be analysed using the Circuit Tools software.

To ensure trouble-free data capture, **RACELOGIC** recommends using a quality SD/SDHC card such as Lexar, SanDisk or Kingston.



Analyse your data using **Circuit Tools software**



Interested in recording RPM or other vehicle data too? Try the **Micro Input Module** with four analogue inputs.